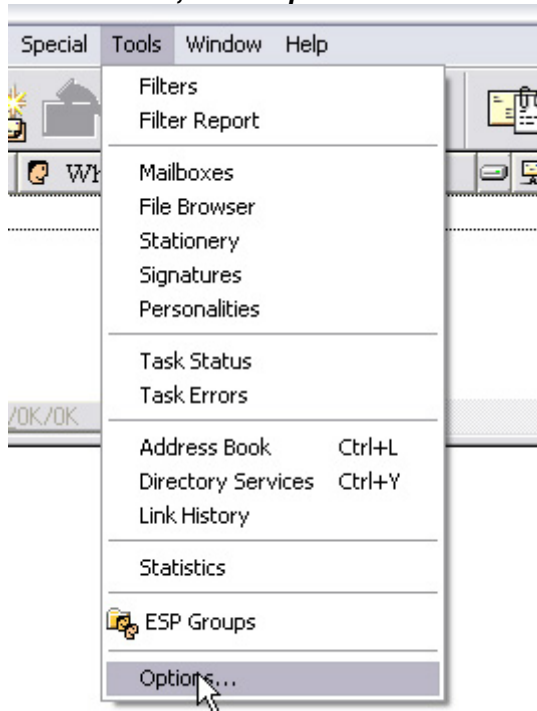


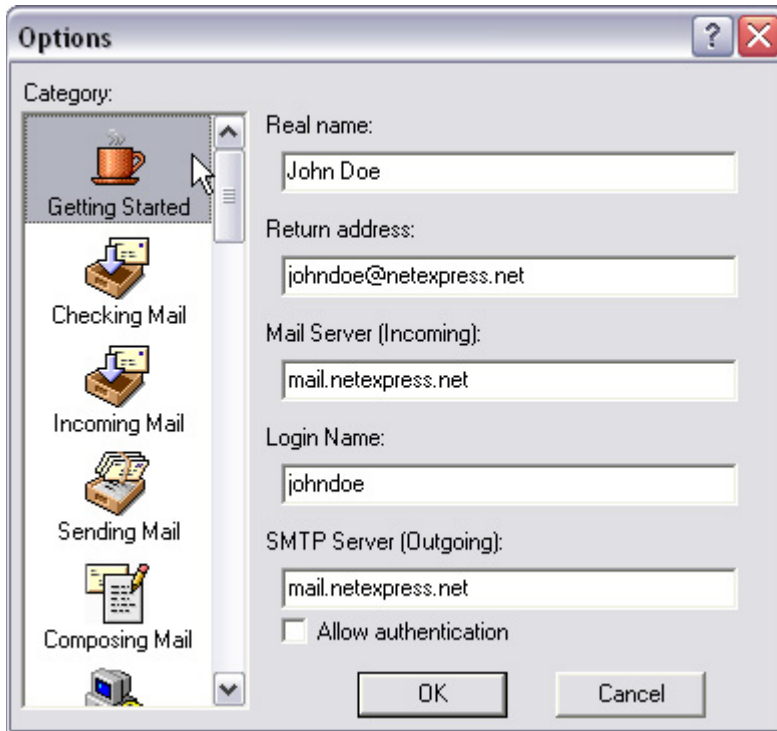
Eudora 5 Setup Instructions

Click "Tools", then "Options".

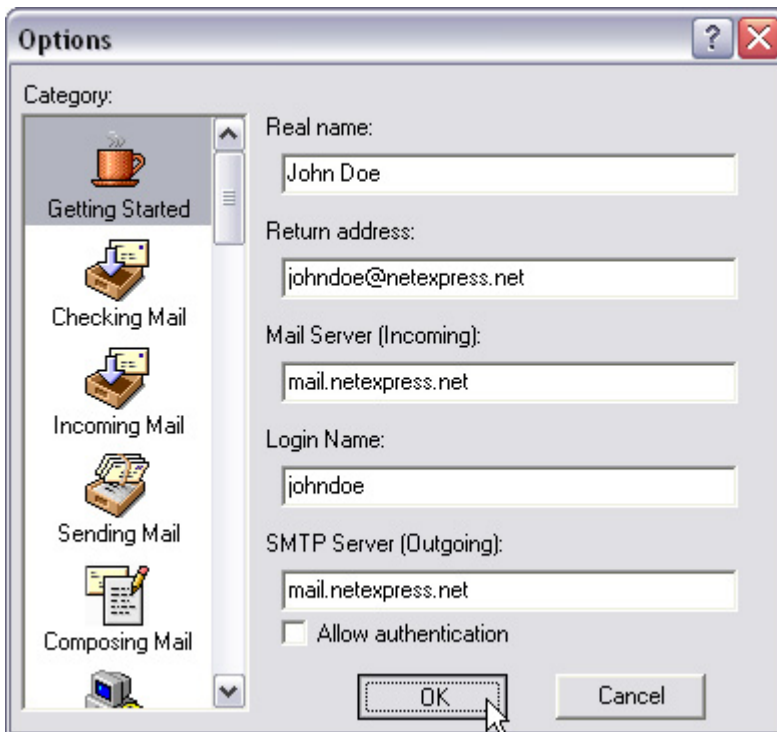


Make sure the "Getting Started" item is selected on the left, then fill in your name, email address, and mail server information.

***Please note: both the incoming and outgoing mail servers should be entered as "mail.netexpress.net"**

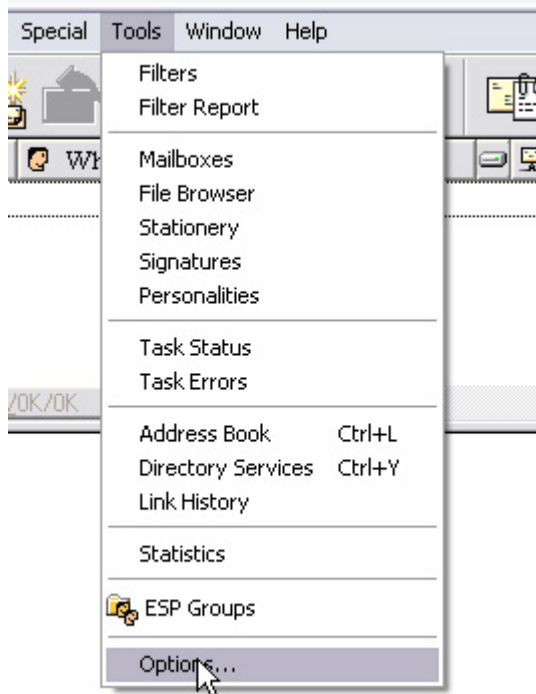


Click "OK" to finish.

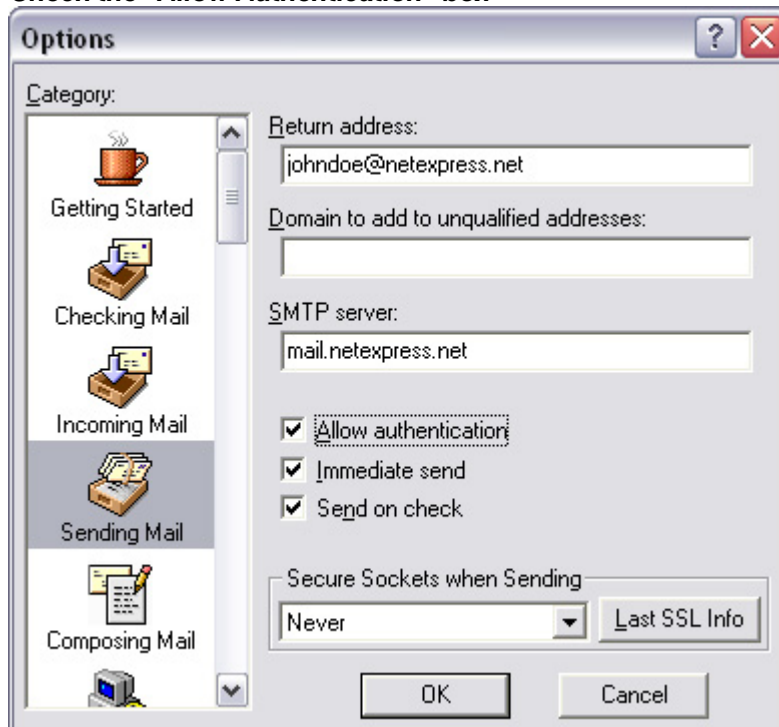


SMTP Authentication

Click the "Tools" menu, then click on "Options..."



**Click the "Sending Mail" category on the left
Check the "Allow Authentication" box**



**Click the "OK" button on the "Options" window
Eudora is now configured to use SMTP Authentication.**