

Internet Access Setup Instructions

Windows 95/98:

Open "**My Computer**" then "**Dial-up Networking**"

Double-click the "**Make New Connection**" icon.

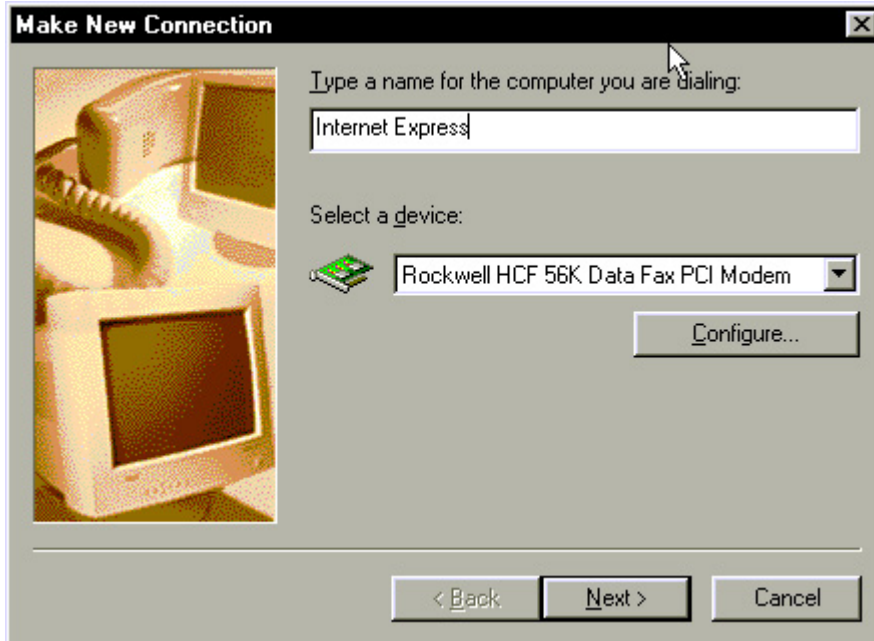
Correct settings can be seen below.

Windows ME:

Click "**Start**", then "**Settings**", then "Control Panel". Next, double-click on "**Dial-up Networking**"

Double-click the "**Make New Connection**" icon.

Correct settings can be seen below.



· Note: Your modem should automatically be selected in the second field so you should not need to change anything there.



· View our list of dialup telephone numbers [here](#). There is no need to enter the area code if it is a local number for your location.

